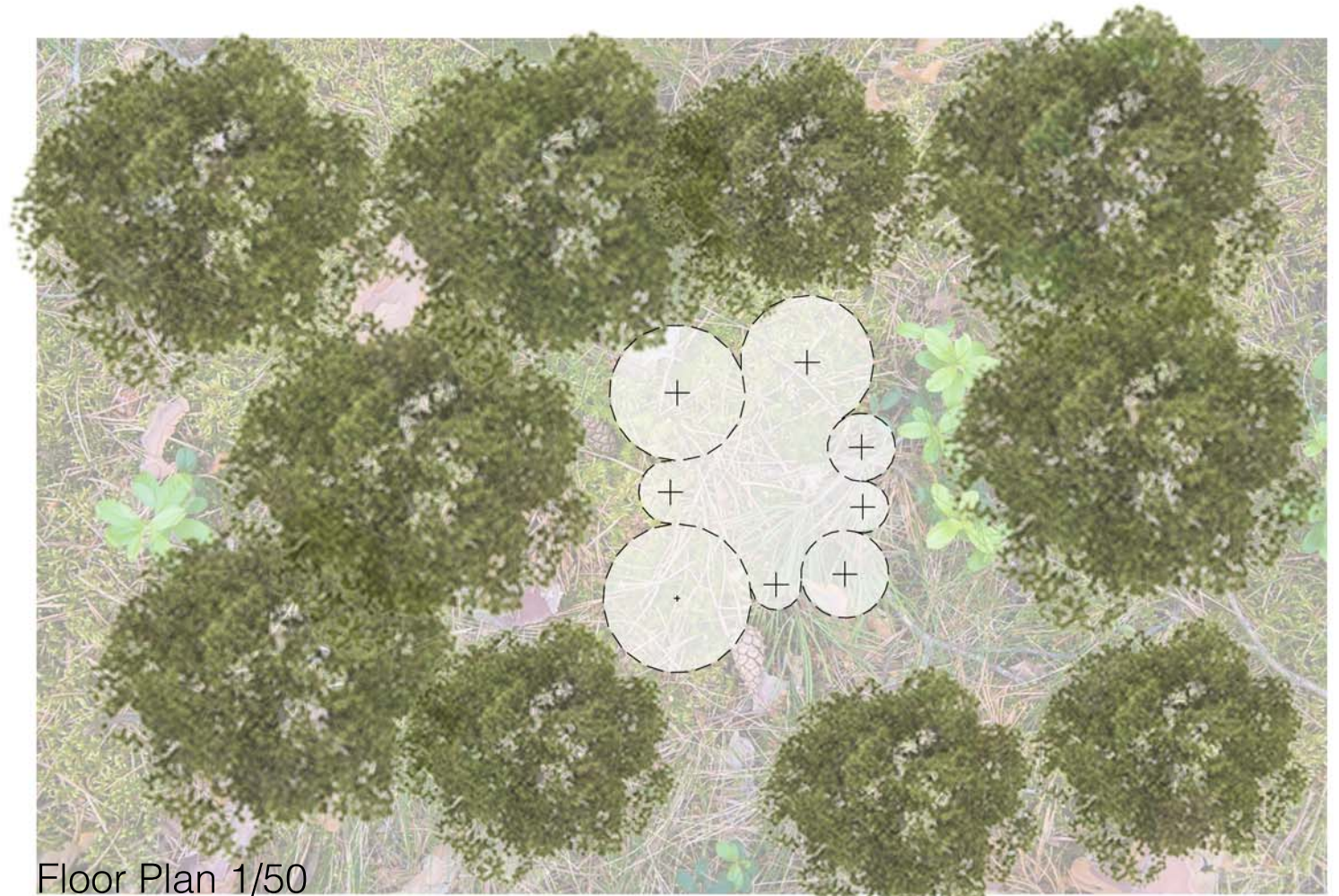


ETHEREAL

The proposal seeks to recreate a personal and unique contact with nature. Inserted in the middle of the forest, surrounded by trees and vegetation, our intervention is constructed as an interruption in the natural landscape as an invitation, without modifying it, in its natural state. Its ethereal body, transparent, vertical, subtle and agitated by the force of the wind, allows us to recreate a dreamlike scenery, where visitors can enter a unique world, passing through light membranes and encountering nature in the center of the built intervention. The dimensions allow the visitor to rest in the center and have a different look at the sky, framed by the sensual curves from which the canvases hang. The main structure of the rings is hanging from the trees themselves, to avoid any contact with the floor that does not allow us to appreciate its lightness. It is also proposed that from these rings, which can change in their disposition according to the place, emit a clear and precise light, aligned with the fabrics, which allows accentuating the idea of a floating structure.



Floor Plan 1/50

Front elevation 1/50

Side elevation 1/50

