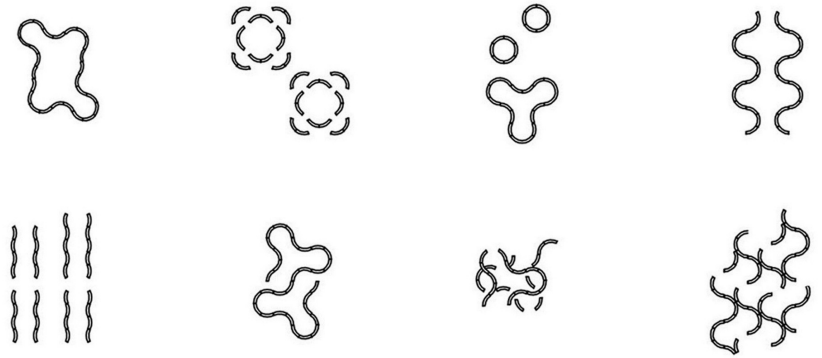




## serpentine transformable scenarios

An intervention that increases the imaginary of the landscape by creating sensitive dialogues between community and nature in which citizens could participate, interact and reflect about their own relationship with the natural environment.

The project is proposed as an interactive and chameleon piece formed by a system that has the capacity of constant transformation by creating different types of spaces and situations. The intervention, as a conductive thread, will travel across natural elements, drawing a new reading of the garden. Every module can be integrated to each other in constant dialogue with the natural surroundings. The system can be adaptable, changing its disposition and it can be modified -to grow or decrease- generating diverse scenarios and activities: spaces of dialogue, exhibition and coexistence, spaces for writing, drawing, reading, walking, playing, sharing plants, eating or meeting.



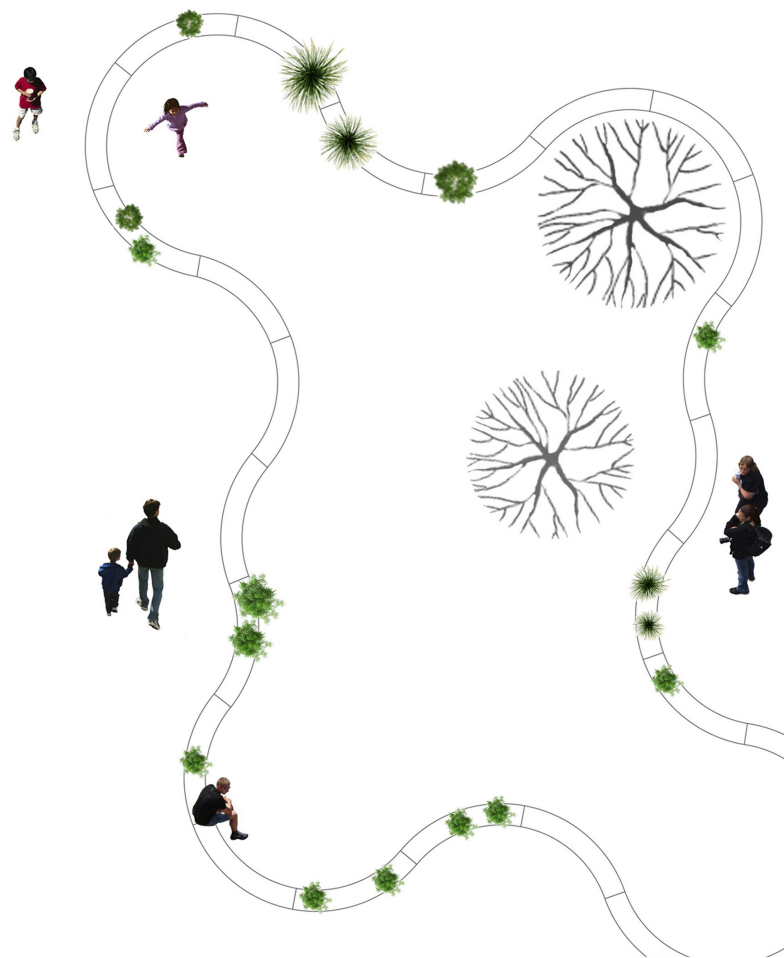
The installation will be enriched through the dialogue and participation of local inhabitants offering diverse experiences: the experience of reading, the inspiration of gaining and sharing knowledge, the relief of a moment's escape, the charm of a chance encounter. The installation will also promote the act of sharing plants as an educational and participatory experience connecting and inspiring citizens through the immediacy of sharing.

### A COLLABORATIVE green DEVICE . plants & ideas

The project will highlight and encourage communication and exchange of ideas, thoughts, and knowledge among individuals.

**plants:** The intervention, inspired from plant containers and flower pots placed by neighbors in courtyards gardens, balconies, terraces and front gardens, will offer the possibility that citizens could bring their own plant as a dispositive for exchanging and sharing green ideas.

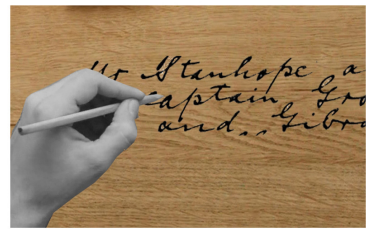
**ideas:** The installation will provide an experience of dialogue promoting the act of writing and drawing as an educational and participatory experience.



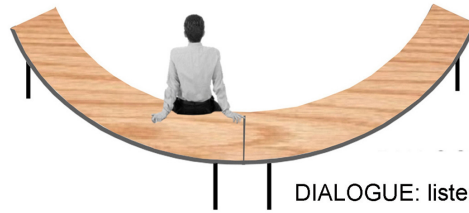


# serpentine

transformable scenarios



GASTRONOMY : community eating



DIALOGUE: listening, meeting, perform

exhibition



sharing plants



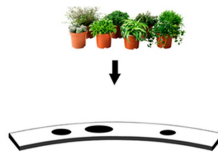
sharing thoughts and ideas  
writing, drawing and reading



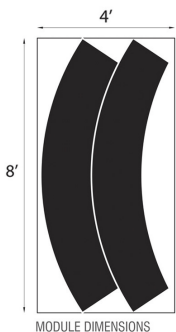
table



bench



plant pot containers



The system is formed by single modules (up to 30 modules- 14 pieces of 18 inches of height for benches and 16 pieces of 30 inches. of height for tables. Each module is made up of two elements: the tubular steel structure and the outdoor wood cover. The modules could be easily assembled and disassembled.

## system

