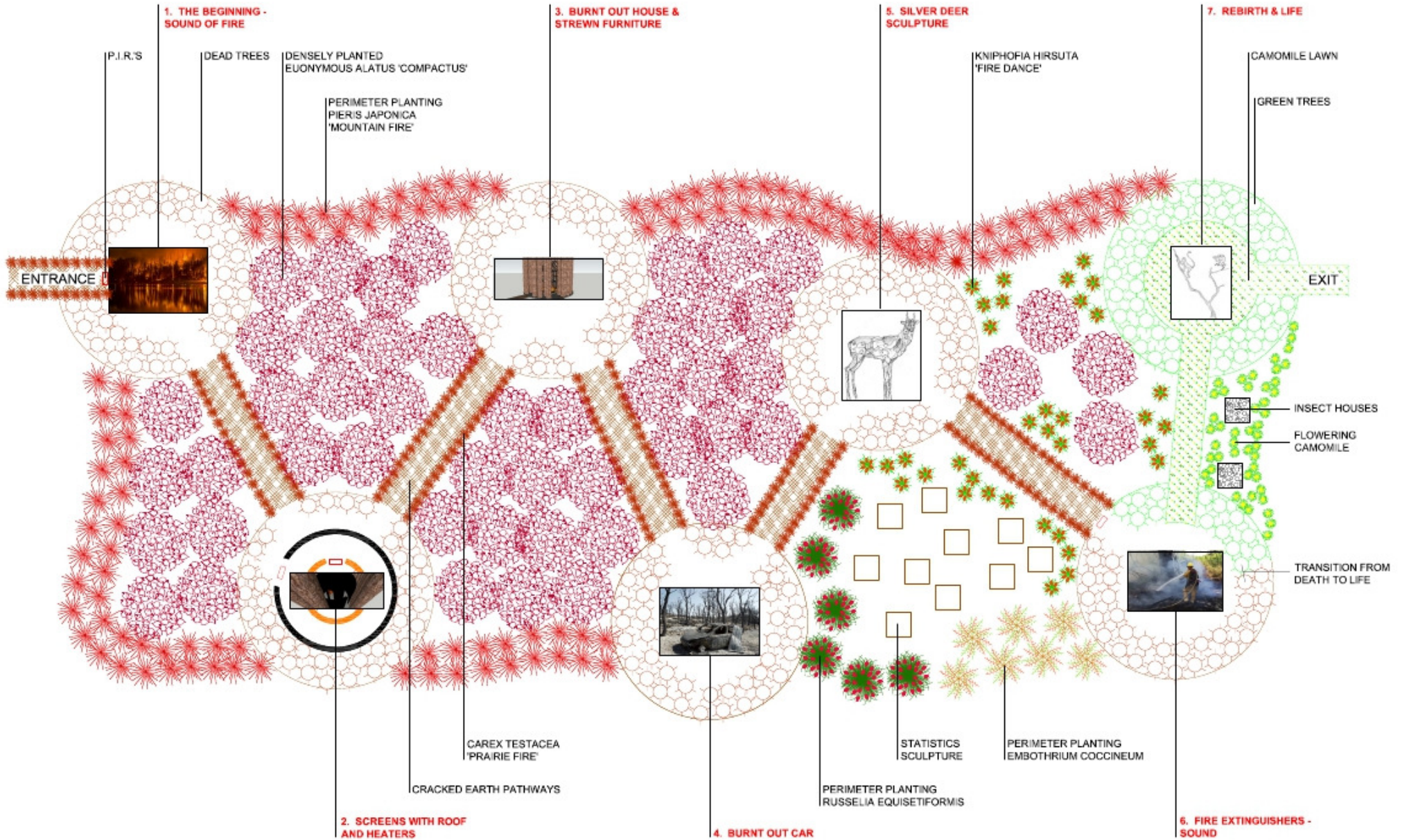


Text describing concept:

The aim of the installation Ring of Fire; bring the visitor into the experience of fire and its effects through an interactive series of circles using a combination of sounds video and sculpture. The circles are created by installation of burnt remains of pines sourced from forest fires.

Entering circle 1 sets of P.I.R. sounds of forest fire, circle 2 an enclosed unit with internal video wall of raging fire intended to recreate the claustrophobia of fire, again activated by P.I.R. Circle 3 the aftermath of fire, steel frame of a burnt out dwelling, 4 takes us through the remains of personal belonging, burnt out vehicle circle 5 will contain a life-size sculpture of a Stag Deer, but without its horns. It is proposed the sculpture will be made in hollow metal. The journey from 4/5/6 features upright wooden sculpture with carved details economic effects of fire worldwide. Circle 6 sets out to explore new technology and methods being used to combat fire. Circle 6 to 7 shows signs of rebirth and regrowth through the use of lower level planting living trees and insect houses.

# Ring of Fire



PLOT SIZE APPROX 250m<sup>2</sup>

## **List of Suggested Plants**

- (1) Burnt pine trees at at least 4 meters tall [possible sourced from burnt forestry stock Canada)
- (2) *Pinus banksiana* (Live species circle 7)
- (3) *Pieris Japonica* Forest Flame
- (4) *Carex Testacea* "Prarie Fire"
- (5) *Euonymus Alatus* 'Compactus' (burning bush)
- (6) *Russelia equisetiformis* (Firecracker plant)
- (7) *Kniphofia hirsuta* "Fire Dance"
- (8) *Chamaemelum nobile*
- (9) *Chamaemelum nobile* 'treneague'