

Guess Who's Coming to Dinner?

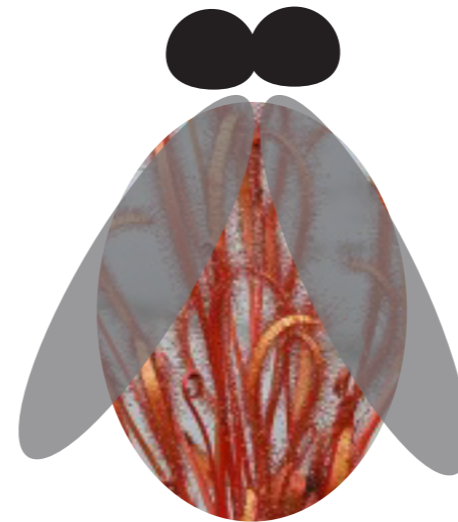
Guess Who's Coming to Dinner

Carnivorous plants are rarely planted in the garden.

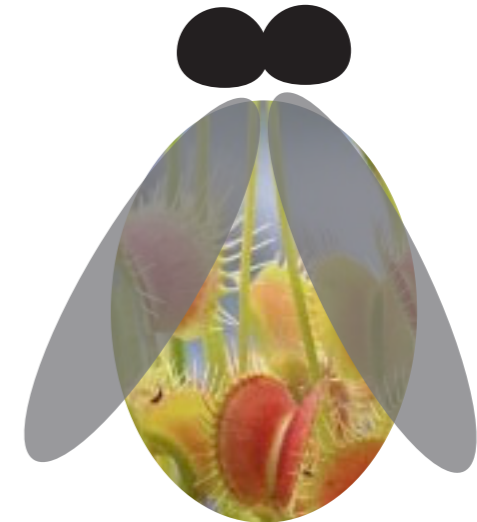
Strangely attractive, yet often overlooked carnivorous plants are quite useful, from insect management to bog retention.

On the menu: small insects

Guess Who's Coming to Dinner is an invitation to sit at a table and patiently wait for dinner to arrive and to be consumed on your plate. It is a chance to sit and intimately observe the dining habits of a variety of carnivorous plants.



Drosera Capensis "Sundew"



Dionaea mucipula "Spider"

